

Flute 1

Blood from Stone

for chamber orchestra

1. Kyrie

$\text{♩} = 96$

Charlie Barber

Tubular Bells

A **Ob. 1**

10 **B**

20 *f*

29 *mf*

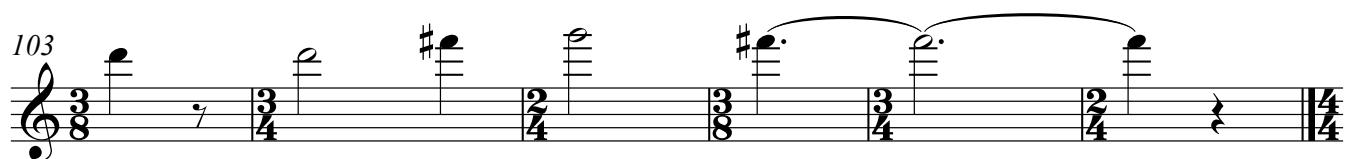
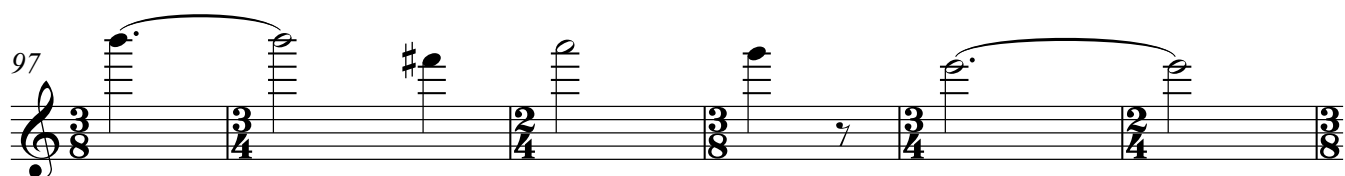
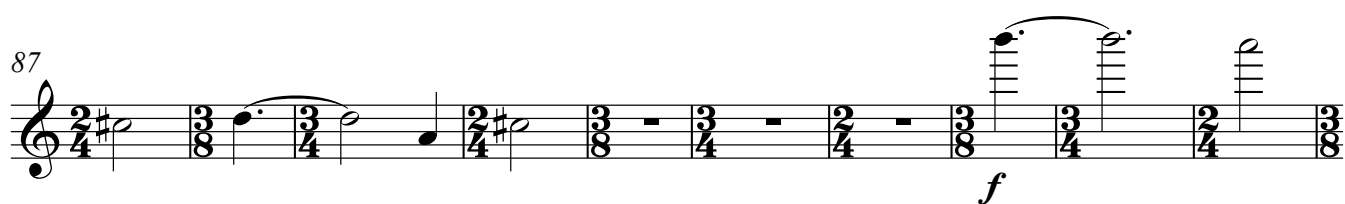
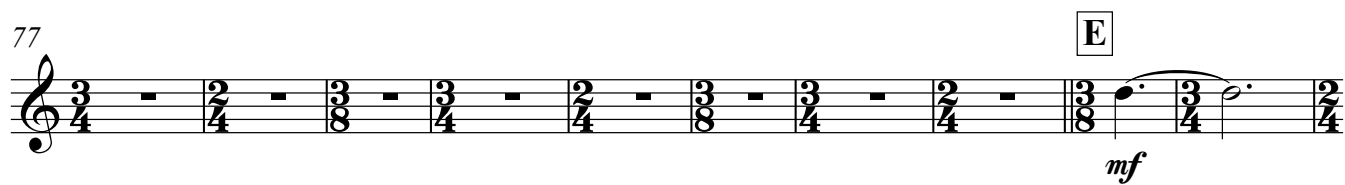
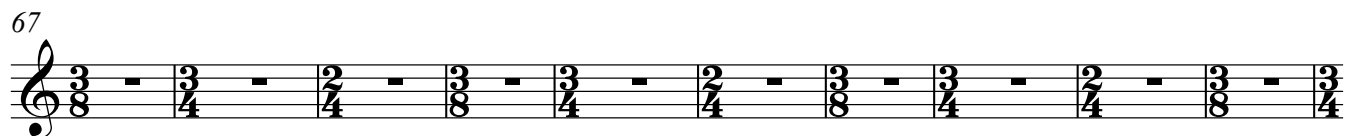
37 **C** **Cl/Tpt** *f*

46

55 **D**

61

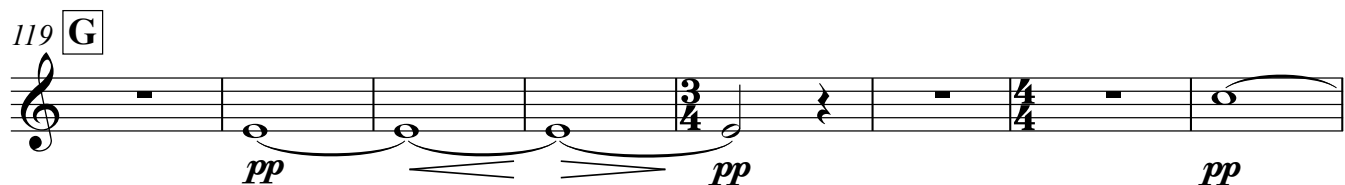
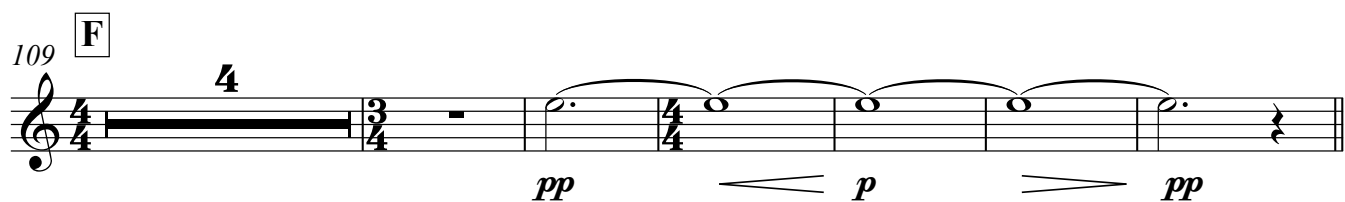
Flute 1



2. Perspective

Tranquillo

♩ = 60



139 **I**

p cresc. mp pp

149 **J**

pp cresc. mp pp

157 **K**

cresc. mp

165

pp

3. Releasing the sculpture

Allegro, con energico

♩ = 120

172 **L**

mf

181 **M**

mf

189 **N**

mp

Flute 1

197 0

mf *cresc.*

213 Q

The musical notation shows a sequence of seven measures on a single staff. The time signatures are 2/4, 3/4, 4/4, 3/4, 4/4, 3/4, and 2/4. The first three measures (2/4, 3/4, 4/4) each contain a whole rest. The fourth measure (3/4) contains a half note, with a '2' written above it. The fifth measure (4/4) contains a whole rest. The sixth measure (3/4) contains a whole rest. The seventh measure (2/4) contains a whole rest. The notation ends with a double bar line.

221 R

f

228

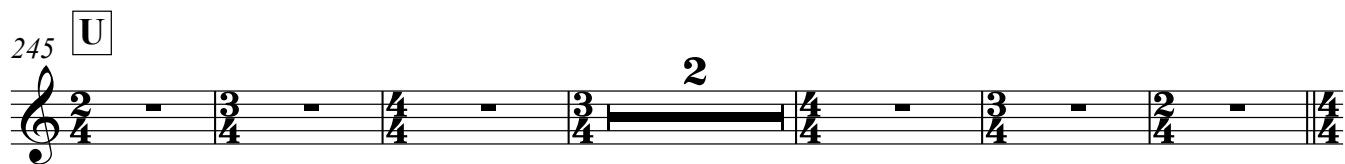
p

236

T

The musical notation shows a single-measure rest in 2/4 time. The rest is represented by a horizontal line with a vertical tick mark at the beginning. The time signature 2/4 is indicated at the start of the staff. A box labeled 'T' is placed above the staff, and a box labeled '2' is placed below the staff.

245 **U**



253 **V**

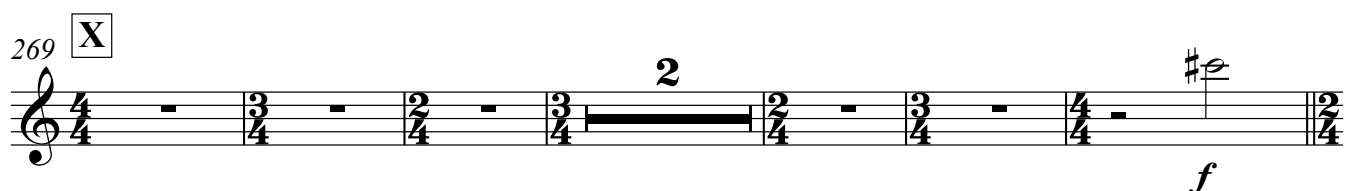


W

261

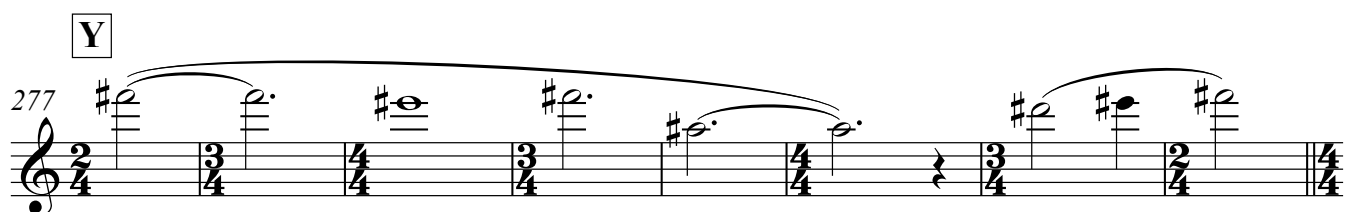


269 **X**

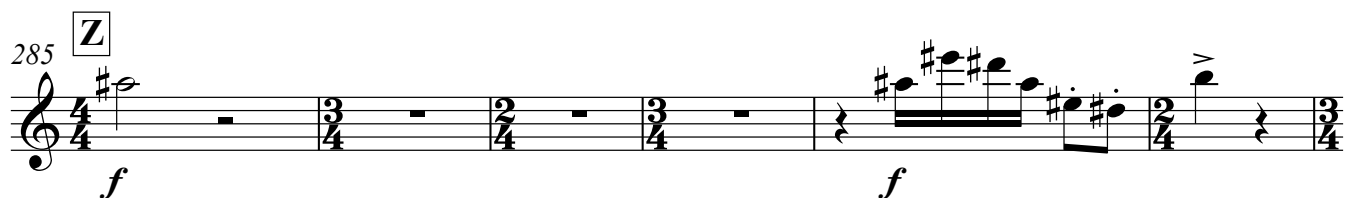


Y

277



285 **Z**



291

